

# Milesight

## AI 360° Panoramic Fisheye Network Camera

NDAA

IP67

IK10



DATASHEET

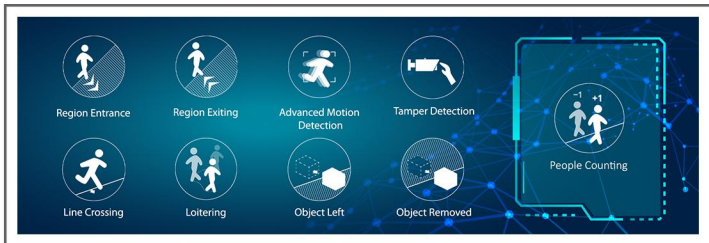


### KEY FEATURES

- ▶ NDAA Compliance (The fully NDAA-compliant products are well suited for government, defense and a range of projects subject to the NDAA.)
- ▶ 8/12MP Ultra High Resolution (Capturing images of the entire area with superb clarity and finest details.)
- ▶ On-board/Client-side Dewarping (Two ways of dewarping to bring users great flexibility during operation.)
- ▶ Multi-interface (Easy installation with built-in Microphone, Audio I/O, Alarm I/O and DC12V.)
- ▶ Smart IR II Technology (Combining the High Beam and Low Beam to adjust IR intensity to fit different lighting conditions.)
- ▶ 120dB Super WDR (Excellent performance even when the ratio of the luminosity of brightest and darkest is up to 120dB.)
- ▶ 256G (Supporting ultra-large external microSD/SDHC/SDXC card storage up to 256G.)
- ▶ Two Compatible Modes (Bundle-Stream Mode combines all channels into one for easier compatibility. Multi-Channel Mode sends all the original channels for separate settings.)
- ▶ Smart Stream (Bandwidth, storage and bit rate are saved with Smart Stream On, e.g. H.265<sup>+</sup> saves 70%~80% bandwidth that of H.264.)

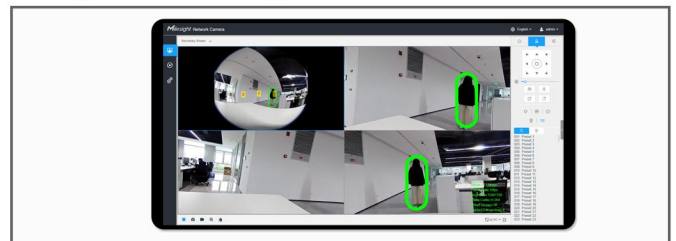
### AI Video Analytics

- 8 intelligent VCA modes powered by AI engine, provides advanced and accurate smart video analysis for network cameras.
- People Counting technology provides high accuracy and real-time data based on AI algorithm with statistic reports.



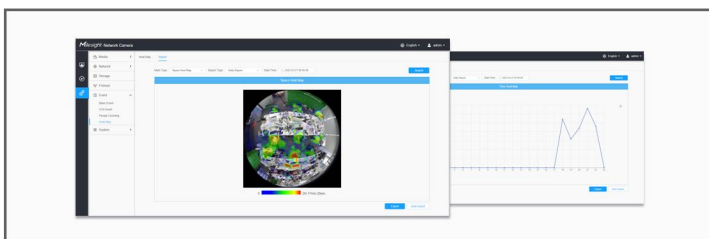
### Fisheye Auto Tracking

The algorithm-based Fisheye Auto Tracking enables the Fisheye Camera to leverage digital PTZ to better safeguard the monitored area from overall to partition. When moving object is detected in the view, the Original view or Panoramic view will display the whole view, while other Regional views will cooperate with the linkage to track the details.



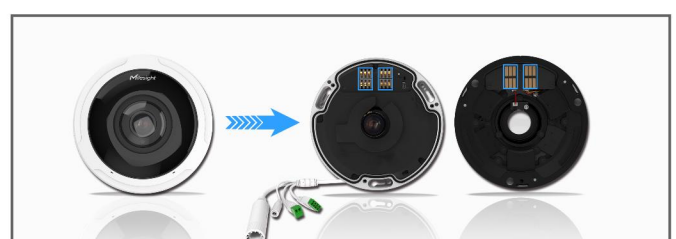
### Advanced Heat Map

Applied in panoramic cameras, the Advanced Heat Map is used for the statistics of popularity in surveillance zones. Featuring various detailed configurations and intuitive Time/Space pattern, it visualizes visitor behavior which would greatly help the business intelligent management for smarter retail solutions.



### Exquisite Design

The body design of the camera insists on the idea of neatness and exquisiteness. As a whole, the screw-free design and Multiple-interface Cable keep the body neat. The Power Supply Board replaced the traditional way of power supply with cable which freeing interior space, making the camera an art of surveillance inside and out.



# AI 360° Panoramic Fisheye Network Camera



|                  | Model                | MS-C8274-PA (4K)  | MS-C9674-PA (12MP)  |
|------------------|----------------------|---|---|
| <b>Camera</b>    | Image Sensor         | 1/1.8" Progressive Scan CMOS  | 1/1.7" Progressive Scan CMOS  |
|                  | Min. Illumination    | Color: 0.008Lux@F1.8<br>B/W: 0Lux with IR on  | Color: 0.05Lux@F2.8<br>B/W: 0Lux with IR on   |
|                  | WDR                  | 120dB Super WDR   |   |
|                  | Lens                 | 1.5mm@F1.8  | 1.98mm@F2.8   |
|                  | Mount                | M12   |   |
|                  | Field of View        | Ceiling Mount: 360°; Wall Mount: 180°; Flat Mount: 360°   |   |
|                  | Shutter Time         | 1/100000s~1s  |   |
|                  | IR Distance          | Up to 15m   |   |
|                  | Day/Night Mode       | Day/Night/Auto/Customize/Schedule   |   |
|                  | S/N                  | >55dB   |   |
| <b>Video</b>     | Max.Input Resolution | 3840x2160   | 4000x3000   |
|                  | Primary Stream       | Fisheye View:<br>60Hz: 30fps@(2144x2144, 2048x2048, 1920x1920, 1280x1280)<br>50Hz: 25fps@(2144x2144, 2048x2048, 1920x1920, 1280x1280)   | Fisheye View:<br>60Hz: 30fps@(3000x3000, 2560x2560, 1920x1920, 1280x1280)<br>50Hz: 25fps@(3000x3000, 2560x2560, 1920x1920, 1280x1280) |
|                  | Secondary Stream     | Fisheye View:<br>60Hz: 30fps@(1280x960, 1024x1024, 736x736, 576x576)<br>50Hz: 25fps@(1280x960, 1024x1024, 736x736, 576x576)   |   |
|                  | Video Compression    | H.265+/H.265(HEVC)/H.264+/H.264   |   |
|                  | Video Bit Rate       | 16Kbps~16Mbps(CBR/VBR Adjustable)   |   |
|                  | Privacy Masking      | Up to 24 areas  |   |
|                  | ROI                  | Up to 8 areas   |   |
|                  | Image Setting        | Brightness/Contrast/Saturation/Sharpness  |   |
| <b>Display</b>   | Mount Mode           | Ceiling Mount/Wall Mount/Flat Mount   |   |
|                  | Decoding Mode        | On-board Dewarping/Client-side Dewarping  |   |
|                  | Display Mode         | <b>11 display modes in total</b><br><b>Client-side Dewarping:</b><br>Ceiling Mount: 1O, 1P, 2P, 4R, 1O3R, 1P1R, 1P4R, 1P6R, 1O8R<br>Wall Mount: 1O, 1P, 4R, 1O3R, 1P1R, 1P4R<br>Table Mount: 1O, 1P, 2P, 4R, 1O3R, 1P1R, 1P4R, 1P6R, 1O8R<br><b>On-board Dewarping:</b><br>Ceiling Mount: 1O, 1P, 2P, 4R, 1O3R, 1P3R, 1O1P3R<br>Wall Mount: 1O, 1P, 4R, 1O3R, 1P3R, 1O1P3R<br>Table Mount: 1O, 1P, 2P, 4R, 1O3R, 1P3R, 1O1P3R<br><br>Note:<br>1. Only Fisheye in Multi-Channel Mode supports 1O1P3R.<br>2. The above letters O, P and R are explained as follows:<br>O----Fisheye View; P----180° Panoramic View; 2P----2*180° Panoramic View; R----PTZ |   |
| <b>Interface</b> | Ethernet             | 1*RJ45 10M/100M/1000M Ethernet Port   |   |
|                  | Audio I/O            | Built-in Microphone; 1/1 (Multi-interface Version)  | Built-in Microphone and Audio Input/Output interface  |
|                  | Alarm I/O            | 1/1 (Multi-interface Version)   | 1/1   |
| <b>Network</b>   | Network Storage      | NAS(Support NFS, SMB/CIFS), ANR   |   |
|                  | Protocol             | IPv4/IPv6, ARP, TCP, UDP, RTCP, RTP, RTSP, RTMP, HTTP, HTTPS, DNS, DDNS, DHCP, FTP, NTP, SMTP, SNMP, UPnP, Bonjour, SIP, PPPoE, VLAN, 802.1x, QoS, IGMP, ICMP, SSL  |   |

# AI 360° Panoramic Fisheye Network Camera

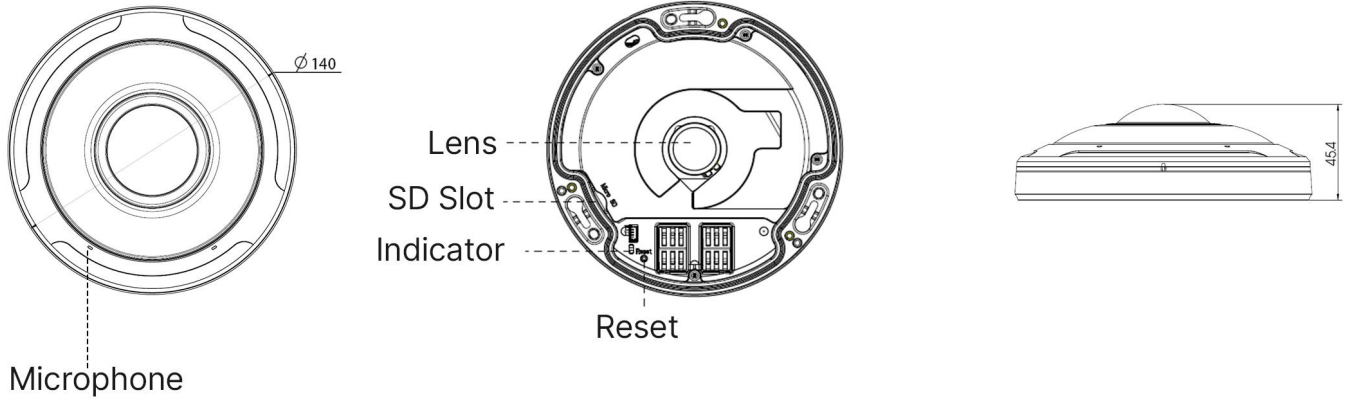


|                              |                          |   |
|------------------------------|--------------------------|---|
| <b>Audio</b>                 | Audio Compression        | G.711/AAC/G.722/G.726   |
|                              | Audio Sampling Rate      | 8/16/32/44.1/48KHz  |
|                              | Audio Bit Rate           | 16~256kbps  |
|                              | Two-way Audio            | Support   |
| <b>Intelligent Analytics</b> | Video Analysis           | Region Entrance, Region Exiting, Advanced Motion Detection, Tamper Detection, Line Crossing, Loitering, Object Left, Object Removed |
|                              | People Counting & Report | Count the number of people entering or exiting, up to 4 detection areas for regional people counting                                |
| <b>System</b>                | Storage                  | Support microSD/SDHC/SDXC Card Local Storage, up to 256G  |
|                              | Advanced Function        | Auto Tracking, Heat Map, BLC, HLC, 2D DNR, 3D DNR, AWB, IP Address Filtering, AGC, Anti-flicker, Deblur, Watermark                  |
|                              | SIP/VoIP Support         | Yes, Voice & Video-over-IP  |
|                              | Event Trigger            | Motion Detection, Network Disconnection, Audio Alarm, External Input, etc.  |
|                              | Event Action             | FTP Upload, SMTP Upload, SD Card Record, External Output, SIP Phone, HTTP Notification, etc.  |
|                              | System Compatibility     | ONVIF Profile G & Q & S & T, API  |
| <b>General</b>               | Working Temperature      | -40°C~60°C  |
|                              | Working Humidity         | 0~90%(Non-condensing)   |
|                              | Power Supply             | PoE (802.3af) / DC 12V±10%  |
|                              | Power Consumption        | 6W MAX / 8W MAX (With IR on)      6W MAX / 11W MAX (With IR on)   |
|                              | Housing                  | Vandal-proof IK10-rated Metal Housing / Up to IP67-rated for Weather-resistant Performance  |
|                              | Weight                   | 700g  |
|                              | Dimensions               | Φ140mmX45.4mm   |
|                              | Warranty                 | 3/5 Years   |

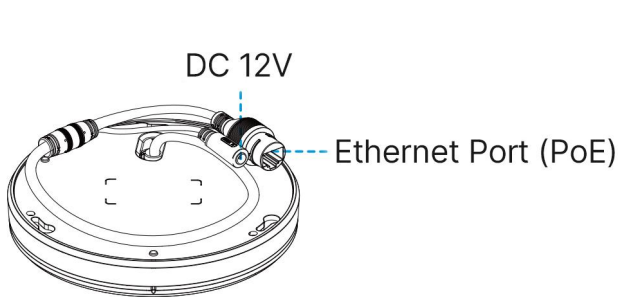
# AI 360° Panoramic Fisheye Network Camera



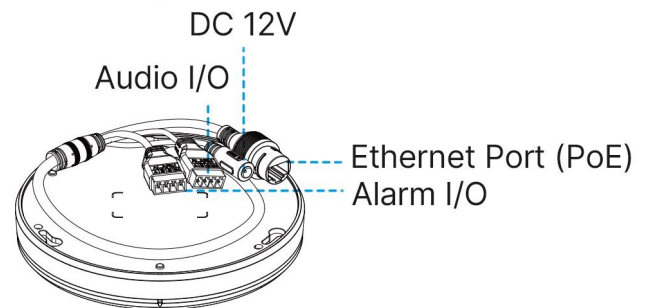
## Structure Diagrams



## 8MP Fisheye Camera



## 8MP Fisheye Camera (Multi-interface Version) 12MP Fisheye Camera



Units: mm

## Accessories Support

### A01 Pole Mount

Weight: 720g  
Dimensions: 170\*51.5\*152.6mm



### A03 External Corner Bracket

Weight: 900g  
Dimensions: 170\*152.5\*76.3mm



### A72 Wall Mount

Weight: 560g  
Dimensions: 240\*160\*136mm



### A75 Junction Box

Weight: 200g  
Dimensions: 145\*167\*33.5mm



### A76 Pendant Mount

Weight: 620g  
Dimensions: 136\*L (L is default as 300mm, also can be extended with A76-L)



### A76-L Extension Lever

Weight: 315g  
Dimensions: 34\*300mm



Milesight Technology | [www.milesight.com](http://www.milesight.com)  
Contact Us: [sales@milesight.com](mailto:sales@milesight.com) | [support@milesight.com](mailto:support@milesight.com)



Add: 220 NE 51st Street, Oakland Park, Florida 33334, USA  
Tel: +1-800-561-0485

Add: 925, Anyang SK V1 Center, LS-ro 116beon-gil, Dongan-gu, Anvng-si, Korea  
Tel: +82-31-990-7732

Add: Building C09, Software Park Phase III, Xiamen 361024, Fujian, China  
Tel: +86-592-5922772

